

九鬼周造の「押し花」標本資料

著者	谷口 文章
雑誌名	甲南大学総合研究所叢書
巻	93
ページ	59-69
発行年	2007-03-31
URL	http://doi.org/10.14990/00001766

九鬼周造の「押し花」標本資料

文学部教授 谷口文章

「私は中學の一年から三年頃迄は植物学者になるつもりでゐた。その當時は植物學に關する書物を買つて貰ふのが一番うれしかつた。大學で文學部を卒業して間もなく私はもう一度理學部へ入學して植物を専攻しようと思つたこともあつた。植物の採集は中學時代にはかなりほん氣で、帝室博物館の植物主任 S 氏に指導して貰つてゐた。今でも當時集めた標本が藏にしまつてある。高等學校時代にも日光の白根山などへ植物採集に出かけたこともあつた。大學を出て數年後チブスにかかつてその保養に時期にまた植物熱が出て宮ノ下の富士屋ホテルに泊まつてゐた私は箱根の植物をあさつて來てはホテルの一室で押したものであつた。ハイデルベルグへ遊學してゐた當時夏休みをアルプス山中で暮らしたことがあつた。その時は毎日を植物の採集と標本の制作とで過ごしてしまつた。」（全集第 5 卷 217 頁）

九鬼は、明治 33 年（1900 年）に、東京高等師範学校附属中学校に入学（12 才）するが、中学 1 年から 3 年頃までは植物学者になるつもりでいた。その思いが、九鬼文庫には、「押し花」の標本資料として 105 枚が保管されている。

それは大正 2 年（1913 年）8 月から 9 月にかけて、アルプス山麓の Sils 地域で植物採集を行ない標本作りをしたものである。採集されてから 90 年余りになり、色彩もあせて保管状態もあまりよくなってきている。そのために、CD-ROM にアーカイブ化することになった。詳細は CD-ROM によって甲南大学の図書館で見ることができる。

本稿は、彼の花の興味および標本技術がどのようなものであるかを示すための資料指針として公開されるものである。

なお、分類分けは、カナダ・ヴィクトリア大学環境学部教授 Nancy Turner 博士に CD-ROM から同定して頂いた。標本の分類分けとともに、どのような花々に九鬼が「いき」を感じていたかが、視覚的にできるようになったことを、ナンシー先生に感謝の意を表しておきたいと思う。ナンシー先生によると、九鬼はかなり専門的知識を身につけているとのことであつた。それは、次のような九鬼の言葉からも明らかである。

「アルプスで採集した植物は其後チューリッヒの専門学者に一々名をつけてもらつてそのままになつてゐた。それを京都の家で拵げだして一週二回の大學の講義の準備と準備の間に暇を作つて朝から晩まで何日間かかかつて臺紙にはりつけたり學名を書き入れたりがあつた。」（同上）

以下、「科 family」の 33 の分類分けと通し番号が示してある。番号は 67 頁以下の 105 枚の押し花標本と対応している。例）「1. *Allosorus crispus*」は、67 頁の「001.jpg」の写真と対応している。

Ferns (non-flowering) (Pteridophytes; Polypodiaceae)

1. *Allosorus crispus* “*Allosorus crispus*” Julier, Ober-Engadin 18.8.1923 (v small fern - finely divided leaves; two types: fertile and sterile)
2. *Asplenium viride* “*Asplenium viride*” Sils-Isola, Ober-Engadin 17.8.1923 (spleenwort; v small fern - finely divided leaves)
3. *Asplenium viride* “*Asplenium viride*” Sils, Ober-Engadin 25.8.1923 (v small fern - finely divided leaves)
4. *Blechnum spicant* “*Blechnum spicant*” Rigi bei Luzern 5.9.1923 (deer fern - spore-bearing fronds) (two feather-like fronds with v thin segments)
5. *Cystopteris fragilis* “*Cystopteris fragilis*” Sgrischus, Ober-Engadin 21.8.1923 (fragile fern: v small fern - finely divided leaves)

6. *Polystichum lonchitis* “Dryopteris Lonchitis” (Aspidium Lonchitis) Sils, Ober-Engadin 27.8.1923 (sword fern: coarse frond)
7. *Polypodium vulgare* “Polypodium vulgare” (Sils-Isola, Ober-Engadin 17.8.1923 (common polypody fern: medium sized fern with simple feather-like fronds)

Club-Mosses (non-flowering) (Lycopodiaceae)

8. *Huperzia selago* “Lycopodium Selago” Cavloccio Sec, Ober-Engadin 26.8.1923 (club-moss: light yellowish- green, fine textured)
9. *Selaginella selaginoides* “Selaginella selaginoides” Surlej, Ober-Engadin 25.8.1923 (v. small, cushion like, light green)

Flowering Plants (Monocotyledons)

Sedge family (no petals) (Cyperaceae)

10. *Eriophorum angustifolium* “Eriophorum angustifolium” Fextal, Ober-Engadin 14.8.1923 (“cottongrass”; white-plumed cottony fruiting heads; silky)
11. *Eriophorum scheuchzeri* “Eriophorum Scheuchzeri” Cavloccio-Sec, Ober-Engadin 26.8.1923 (“cottongrass”; white-plumed cottony fruiting heads; silky)

Lily family (Liliaceae)

12. *Allium schoenoprasum* var. *foliosum* “Allium Schoenoprasum var. foliosum” Julier, Ober-Engadin 18.8.1923 (chives; purple flowers)
13. *Tofieldia calyculata* “Tofieldia calyculata” Sils-Isola, Ober-Engadin 17.8.1923 (two longer stalks (small whitish flowers)
14. *Tofieldia calyculata* “Tofieldia calyculata” Sils-Isola, Ober-Engadin 17.8.1923 (small whitish flowers)

Orchid family (Orchidaceae)

15. *Coeloglossum* [?Habenaria] *viride* “Coeloglossum viride” Sils, Ober-Engadin 27.8.1923 (small whitish flowers)
16. *Helleborine atropurpurea* [?Epipactis *helleborine*] “Helleborine atropurpurea (Epipactis atropurpurea)” Sils-Isola, Ober-Engadin 17.8.1923 (small purple flowers)
17. *Orchis latifolius* “Orchis latifolius” Marmore, Ober-Engadin 13.8.1923 (small whitish flowers)

Grass family (Poaceae, or Graminae)

18. *Poa alpina* var. *frigida* “Poa alpina var. frigida 2 T. f. vivipara” Julier, Ober-Engadin 18.8.1923 (no petals; grass flowers; with tiny live grass plant babies on one fruiting stalk)

Flowering Plants (Dicotyledons)

Umbel or Celery family (Apiaceae or Umbelliferae)

19. *Chaerophyllum hirsutum* “Chaerophyllum hirsutum” Sils-Maria, Ober-Engadin 16.8.1923 (white flowered umbel)
20. *Eryngium alpinum* “Eryngium alpinum” Silvaplana, Ober-Engadin 25.8.1923 (Apiaceae or Umbelliferae) (in folder at bottom of pile with *Calluna* and *Sempervivum* (whitish flowers/)
21. *Peucedanum ostruthium* “Peucedanum Ostruthium” Sils-Isola, Ober-Engadin 17.8.1923 (small flowers ?white)

Borage family (Boragaceae)

22. *Myosotis pyrenaica* “*Myosotis pyrenaica* (M alpestris)” Sgrischus, Ober-Engadin 21.8.1923 (“forget-me-not”; small intense blue flowers)
23. *Myosotis silvatica* “*Myosotis silvatica*” Marmore, Ober-Engadin 13.8.1923 (“forget-me-not”; small blue flowers)
24. *Myosotis silvatica* “*Myosotis silvatica*” Julier, Ober-Engadin 18.8.1923 (taller) (“forget-me-not”; small blue flowers)

Mustard family (Brassicaceae, or Cruciferae)

25. *Biscutella levigata* “*Biscutella levigata*” Sils, Ober-Engadin 24.8.1923 (flowers) (flowers pale yellow)
26. *Biscutella levigata* “*Biscutella levigata*” Sils, Ober-Engadin 16.8.1923 (fruit – oval pods) (flowers light yellow) (closeup photo: #26a)
27. *Biscutella levigata* “*Biscutella levigata*” Marmore, Ober-Engadin 13.8.1923 (flowers light yellow) (closeup photo of #25)
28. *Cardamine amara* “*Cardamine amara*” Fextal, Ober-Engadin 14.8.1923 (flowers white)

Honeysuckle family (Caprifoliaceae)

29. *Linnaea borealis* “*Linnaea borealis*” Sils, Ober-Engadin 19.8.1923 (twinflower: delicate pink trumpet shaped flowers, v. small; finely scented)

Cista family (Cistaceae)

30. *Helianthemum nummularium* “*Helianthemum nummularium* (H. vulgare)”, Sils-Maria, Ober-Engadin 16.8.1923 (Cistaceae) (flowers red)

Orpine or stonecrop family (Crassulaceae)

31. *Sedum alpestre* “*Sedum alpestre*” Sgrischus, Ober-Engadin 21.8.1923 (flowers yellow)
32. *Sempervivum alpinum* “*Sempervivum alpinum*” Fextal, Ober-Engadin 14.8.1923 (in folder at end with *Erica* and *Eryngium*) (flowers pink)
33. *Sempervivum arachnoideum* “*Sempervivum arachnoideum*” Marmore, Ober-Engadin 13.8.1923 (flowers pink)

Dipsaca family (Dipsacaceae)

34. *Knautia silvatica* “*Knautia silvatica*”, Sils-Maria, Ober-Engadin 16.8.1923 (Dipsacaceae) (flowers light purple)
35. *Scabiosa lucida* “*Scabiosa lucida*” Sils-Maria, Ober-Engadin 16.8.1923 (Dipsacaceae) (flowers light purple)

Heather family (Ericaceae)

36. *Calluna vulgaris* “*Calluna vulgaris*” Sils-Maria, Ober-Engadin 12.8.1923 (in folder at end with *Sempervivum* and *Eryngium*) (flowers purple)
37. *Rhododendron ferrugineum* “*Rhododendron ferrugineum*” Julier, Ober-Engadin 18.8.1923 (flowers mauve)

Spurge family (Euphorbiaceae)

38. *Euphorbia cyparissias* “*Euphorbia Cyparissias*” Fextal-Marmore, Ober-Engadin 13.8.1923 (flowers greenish)

Gentian family (Gentianaceae)

39. *Gentiana asclepiadea* “*Gentiana asclepiadea*” Rigi bei Luzern 5.9.1923 (flowers blue)
40. *Gentiana bavarica* “*Gentiana bavarica*” Sgrischus, Ober-Engadin 21.8.1923 (flowers deep blue)
41. *Gentiana bavarica* var. *subcaulis* “*Gentiana bavarica* var. *subcaulis* (G. *imbricata* auct. Non Fröl.)” Sgrischus, Ober-Engadin 21.8.1923 (flowers blue)
42. *Gentiana campestris* ssp. *suecica* “*Gentiana campestris* ssp. *suecica*” Marmore Ober-Engadin 13.8.1923 (flowers blue)
43. *Gentiana campestris* ssp. *germanica* “*Gentiana campestris* ssp. *germanica*” Marmore Ober-Engadin 13.8.1923 (flowers blue)
44. *Gentiana kochiana* “*Gentiana Kochiana* (G. *excisa*)” Sils 20.8.1923 (flowers blue)
45. *Gentiana nivalis* “*Gentiana nivalis*” Fextal, Ober-Engadin 14.8.1923 (v small tubular flowers; deep blue)
46. *Gentiana ramosa* “*Gentiana ramosa* (G. *obtusifolia*)” Marmore, Ober-Engadin 13.8.1923 (flowers blue)
47. *Swertia perennis* “*Swertia perennis*” Rigi bei Luzern 5.9.1923 (flowers blue)

Geranium family (Geraniaceae)

48. *Geranium phaeum* ssp. *lividum* “*Geranium phaeum* ssp. *lividum*” Sils, Ober-Engadin 19.8.1923 (flowers purplish)
49. *Geranium silvaticum* “*Geranium silvaticum*” Fextal, Ober-Engadin 14.8.1923 (flowers purplish)

St. Johns wort family (Hypericaceae)

50. *Hypericum maculatum* “*Hypericum maculatum*” Sils, Ober-Engadin 19.8.1923 (“St. John’s wort”; flowers yellow)

Mint family (Lamiaceae, or Labiatae)

51. *Prunella vulgaris* “*Prunella vulgaris*” Sils-Maria, Ober-Engadin 16.8.1923 (“self heal”; flowers purple)
52. *Prunella vulgaris* “*Prunella vulgaris*” Sils, Ober-Engadin 25.8.1923 (“self heal”; flowers purple)
53. *Satureia alpina* “*Satureia alpina*” Sgrischus, Ober-Engadin 21.8.1923 (“alpine savory”; flowers purplish white)
54. *Satureia alpina* “*Satureia alpina*” Sils, Ober-Engadin 27.8.1923 (“alpine savory”; flowers purplish)
55. *Satureia vulgaris* “*Satureia vulgaris*” Rigi bei Luzern 5.9.1923 (“savory”; flowers purplish white)
56. *Satureia vulgaris* “*Satureia vulgaris*” Sils, Ober-Engadin 24.8.1923 (“savory”; flowers purple)
57. *Teucrium montanum* “*Teucrium montanum*” Sils, Ober-Engadin 27.8.1923 (flowers small ?purplish)
58. *Thymus serpyllum* ssp. *alpestris* “*Thymus Serpyllum* ssp. *alpestris*” Marmore, Ober-Engadin 13.8.1923 (“thyme”; flowers purple)
59. *Thymus serpyllum* ssp. *alpestris* “*Thymus Serpyllum* ssp. *alpestris*” Sils, Ober-Engadin 25.8.1923 (“thyme”; flowers purple)
60. *Thymus serpyllum* ssp. *ovatus* “*Thymus Serpyllum* ssp. *ovatus*” Sils-Maria, Ober-Engadin 16.8.1923 (“thyme”; flowers purple)

Butterwort family (Lentibulariaceae)

61. *Pinguicula alpina* “*Pinguicula alpina*” Maloja, Ober-Engadin 26.8.1923 (v. small insectivorous plant) (“butterwort”; flowers very small; purple)

Evening primrose family (Onagraceae)

62. *Epilobium alpinum* “*Epilobium alpinum* (E. anagallidifolium)” Fextal, Ober-Engadin 15.8.1923 (flowers pink)
63. *Epilobium angustifolium* “*Epilobium angustifolium*” Sils-maria, Ober-Engadin (fireweed: flowers purple)
64. *Epilobium dodonaei* ssp. *flescheri* “*Epilobium Dodonaei* ssp. *Flescheri*” Fextal, Ober-Engadin 14.8.1923 (flowers pink)

Polemonium family (Polymoniaceae)

65. *Polemonium coeruleum* “*Polemonium coeruleum*” Sils-Maria, Ober-Engadin 16.8.1923 (flowers purple)

Polygala family (Polygalaceae)

66. *Polygala amarella* “*Polygala amarella*” Sils, Ober-Engadin 24.8.1923 (flowers purplish)

Primrose family (Primulaceae)

67. *Cyclamen europaeum* “*Cyclamen europaeum*” Vallée des Beauges, Savoie 18.8.26 (Primulaceae) (cyclamen: flowers showy, purple) [NOTE: THE ONLY ONE COLLECTED IN 1926; different place]

Pyrola family (Pyrolaceae)

68. *Pyrola rotundifolia* “*Pyrola rotundifolia*” Silse, Ober-Engadin 24.8.1923 (round-leaved pyrola: flowers small, pink)
69. *Pyrola secunda* “*Pyrola secunda*” Sils-Isola, Ober-Engadin 17.8.1923 (one-sided pyrola: flowers small, white)

Plantain family (Plantaginaceae)

70. *Plantago media* “*Plantago media*” Sils, Ober-Engadin 20.8.1923 (plantain: no petals; greenish flower heads)
71. *Plantago serpentina* “*Plantago serpentina*” Marmore, Ober-Engadin 13.8.1923 (plantain: no petals; greenish flower heads)

Buckwheat family (Polygonaceae)

72. *Oxyria digyna* “*Oxyria digyna*” Fextal, Ober-Engadin 14.8.1923 (mountain sorrel: reddish flower clusters; v small flowers)
73. *Polygonum bistorta* “*Polygonum bistorta*” Sils-Maria, Ober-Engadin 16.8.1923 (alpine bistort: flowers small, white in dense heads)
74. *Polygonum viviparum* “*Polygonum viviparum*” Fextal, Ober-Engadin 14.8.1923 (flowers white, small in dense heads)
75. *Rumex scutatus* “*Rumex scutatus*” Sgrischus, Ober-Engadin 21.8.1923 (flowers v. small, reddish clusters)

Madder family (Rubiaceae)

76. *Galium mollugo* “*Galium Mollugo*” Sils-Maria, Ober-Engadin 16.8.1923 (flowers small, whitish)

77. *Galium verum* “Galium verum” Maloja, Ober-Engadin 26.8.1923 (flowers small, yellow)

Willow family (Salicaceae)

78. *Salix arbuscula* “Salix arbuscula” Sgrischus, Ober-Engadin 21.8.1923 (catkins in frt, small lvs; no petals)

79. *Salix nigricans* “Salix nigricans” Sgrischus, Ober-Engadin 21.8.1923 (long catkins in frt) (no petals)

80. *Salix reticulata* “Salix reticulata” Sgrischus, Ober-Engadin 21.8.1923 (many v small lvs) (no petals)

81. *Salix retusa* “Salix retusa” Julier, Ober-Engadin 18.8.1923 (no petals)

Saxifrage family (Saxifragaceae)

82. *Parnassia palustris* “Parnassia palustris” Fextal-Marmore, Ober-Engadin 13.8.1923 (“grass of Parnassus”; flowers white, in heads)

83. *Saxifraga aizoides* “Saxifraga aizoides” Marmore, Ober-Engadin 13.8.1923 (flowers small, white, in heads)

84. *Saxifraga aizoon* var. *brevifolia* “Saxifraga Aizoon var. brevifolia” Marmore, Ober-Engadin 13.8.1923 (flowers small, white, in heads)

85. *Saxifraga aizoon* “Saxifraga Aizoon” Marmore, Ober-Engadin 13.8.1923 (flowers small, white, in heads)

86. *Saxifraga aspera* “Saxifraga aspera” Sils-Isola, Ober-Engadin 17.8.1923 (flowers small, white, in heads)

87. *Saxifraga aspera* ssp. *bryoides* “Saxifraga aspera ssp. bryoides” Sgrischus, Ober-Engadin 21.8.1923 (flowers small, white, in heads)

88. *Saxifraga rotundifolia* “Saxifraga rotundifolia” Sils, Ober-Engadin 24.8.1923 (flowers small, white, in heads)

89. *Saxifraga rotundifolia* “Saxifraga rotundifolia” Sils, Ober-Engadin 19.8.1923 (larger/taller) (flowers small, white, in heads)

90. *Saxifraga stellaris* “Saxifraga stellaris” Fextal, Ober-Engadin 14.8.1923 (flowers small, white, in heads)

Figwort family (Scrophulariaceae)

91. *Euphrasia alpina* “Euphrasia alpina” Sgrischus, Ober-Engadin 21.8.1923 (“eyebright”; flowers small, mauve)

92. *Euphrasia alpina* “Euphrasia alpina” Sils-Maria, Ober-Engadin 16.8.1923 (“eyebright”; flowers small, mauve)

93. *Linaria alpina* “Linaria alpina” Sgrischus, Ober-Engadin 21.8.1923 (flowers small, purple)

94. *Melampyrum silvaticum* “Melampyrum silvaticum” Sils-Maria, Ober-Engadin 15.8.1923 (flowers pinkish purple)

95. *Pedicularis verticillata* “Pedicularis verticillata” Sgrischus, Ober-Engadin 21.8.1923 (flowers purple)

96. *Pedicularis rostrato-spicata* “Pedicularis rostrato-spicata (P. incarnata)” Julier, Ober-Engadin 18.8.1923 (flowers purple)

97. *Rhinanthus angustifolius* “Rhinanthus angustifolius (Alectorolophus angustifolius)” Sils-Maria, Ober-Engadin 15.8.1923 (flowers ?yellow)

98. *Rhinanthus glacialis* “Rhinanthus glacialis (Alectorolophus lanceolatus)” Sils-Maria, Ober-Engadin 15.8.1923 (flowers ?yellow)

99. *Veronica chamaedrys* “Veronica Chamaedrys” Sils, Ober-Engadin 29.8.1923 (flowers ?purple)

100. *Veronica officinalis* “*Veronica officinalis*” Surlej, Ober-Engadin 25.8.1923
(flowers purple)
101. *Veronica officinalis* “*Veronica officinalis*” Sils, Ober-Engadin 27.8.1923
(flowers purple)

Valerian family (Valerianaceae)

102. *Valeriana montana* “*Valeriana Montana*” Sgrischus, Ober-Engadin 21.8.1923
(“mountain valerian”; flowers small, whitish/pink, clustered)
103. *Valeriana officinalis* “*Valeriana officinalis*” Sils, Ober-Engadin 20.8.1923
(“common valerian”; flowers white)

Violet family (Violaceae)

104. *Viola calcarata* “*Viola calcarata*” Sgrischus, Ober-Engadin 21.8.1923 (flowers
purple, yellow)
105. *Viola tricolour* ssp. *arvensis* “*Viola tricolour* ssp. *arvensis*” Sils, Ober-Engadin
24.8.1923 (flowers purple, white, yellow)



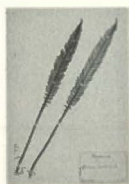
001.jpg



002.jpg



003.jpg



004.jpg



005.jpg



006.jpg



007.jpg



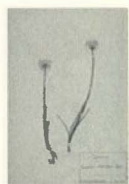
008.jpg



009.jpg



010.jpg



011.jpg



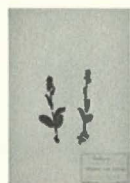
012.jpg



013.jpg



014.jpg



015.jpg



016.jpg



017.jpg



018.jpg



019.jpg



020.jpg



021.jpg



022.jpg



023.jpg



024.jpg



025.jpg



026.jpg



028.jpg



029.jpg



030.jpg



031.jpg



032.jpg



033.jpg



034.jpg



035.jpg



036.jpg



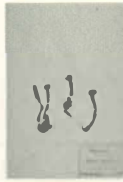
037.jpg



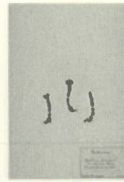
038.jpg



039.jpg



040.jpg



041.jpg



042.jpg



043.jpg



044.jpg



045.jpg



046.jpg



047.jpg



048.jpg



049.jpg



050.jpg



051.jpg



052.jpg



053.jpg



054.jpg



055.jpg



056.jpg



057.jpg



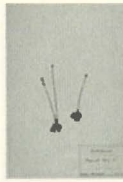
058.jpg



059.jpg



060.jpg



061.jpg



062.jpg



063.jpg



064.jpg



065.jpg



066.jpg



067.jpg



068.jpg



069.jpg



070.jpg



071.jpg



072.jpg



073.jpg



074.jpg



075.jpg



076.jpg



077.jpg



078.jpg



079.jpg



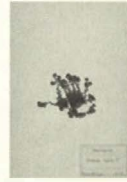
080.jpg



081.jpg



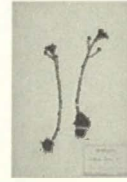
082.jpg



083.jpg



084.jpg



085.jpg



086.jpg



087.jpg



088.jpg



089.jpg



090.jpg



091.jpg



092.jpg



093.jpg



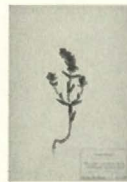
094.jpg



095.jpg



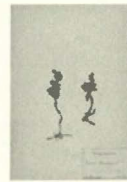
096.jpg



097.jpg



098.jpg



099.jpg



100.jpg



101.jpg



102.jpg



103.jpg



104.jpg



105.jpg